

IGNITE ENERGY CORP. LAND HOLDING & PROSPECT SUMMARY



 LAND HOLDING & PROSPECT SUMMARY



Summary:

Ignite Energy Corp. owns approximately 40,000 acres, (60 + sections) of mineral rights primarily in East Central and Northern Alberta, on proven geological oil and gas trends.

Ignite's focus over the past 10 years has been acquiring land in established areas where, in the past, tremendous economic potential has been discovered. With the advent of new seismic and drilling technologies, these plays are active again in Alberta.

East Central Alberta:

The majority of Ignite's lands are located in East Central Alberta, where both conventional and unconventional wells are currently being drilled nearby for the Viking, Mannville and Nisku.

Provost Region:

Horseshoe Lake Area: Twp 39 -41 Rge 7-8W4M

Viking

Horseshoe Lake consists of 8600 acres, of both Viking and Mannville rights. The Viking play is currently one of the most active non-conventional drilling plays in Alberta and Ignite's lands are within the regional Viking oil and gas trend. Using information from existing production and wellbore data, we believe an excellent opportunity for a large Viking oil project on our extensive land base at Horseshoe exists.

Mannville:

In addition, the Mannville zones at Horseshoe have proved productive in the past although the area had not been extensively drilled. With the improvements in 3D seismic technology, we expect Horseshoe Lake to be an excellent drilling opportunity. Recently, our large land block was offset with a directional and two long reach horizontal wells which appear successful.

Consort Region:

Consort: Twp 34-35 Rge 5W4M

Ignite owns another Viking prospect at Consort where we have another large land block, (2240 acres) offsetting significant drilling and acquisition activity.

Gooseberry Lake: Twp 36 Rge 6W4M

At Provost we have an excellent seismically defined, high impact Mannville oil play with multi-zone potential of 600K-1 MM barrels, offsetting a proven pool of 3.5MM barrels.

David: Twp 40 Rge 3W4M

Ignite owns an established Mannville pool with multi-zone potential of 280 acres offsetting substantial Mannville production.

Chauvin Region:

Edgerton/Ribstone: Twp 43-44 Rge 4W4M

At Ribstone, Ignite has a seismically identified Nisku horizontal location offsetting 2 vertical producing wells, which to date have produced 310K bbls. The horizontal analog to the north in Edgerton has produced over 340K bbls where Ignite owns both the Nisku and Sparky rights.

Halkirk Region:

Halkirk: Twp 41-43 Rge 14-15W4M

Ignite owns 4 sections on a recently active Viking Oil play. These same lands have excellent Glauconite potential.

Peco Region:

Peco: Twp 48 Rge 15-16W5M

Ignite holds 1920 contiguous acres in the West Pembina Area with multi-zone potential in Rock Creek, Shunda, Poker Chip, Nisku and Duvernay formations.

Nipisi / Utikuma Region:

Utikuma Lake: Twp 80 Rge 7W5M

Ignite has a large land base bordering the legacy Utikuma Keg River oil pool, where on vertical wells, individual wells have cum'd oil production in excess of 1MM bbls per well. Also excellent Gilwood oil potential.

Leduc Region:

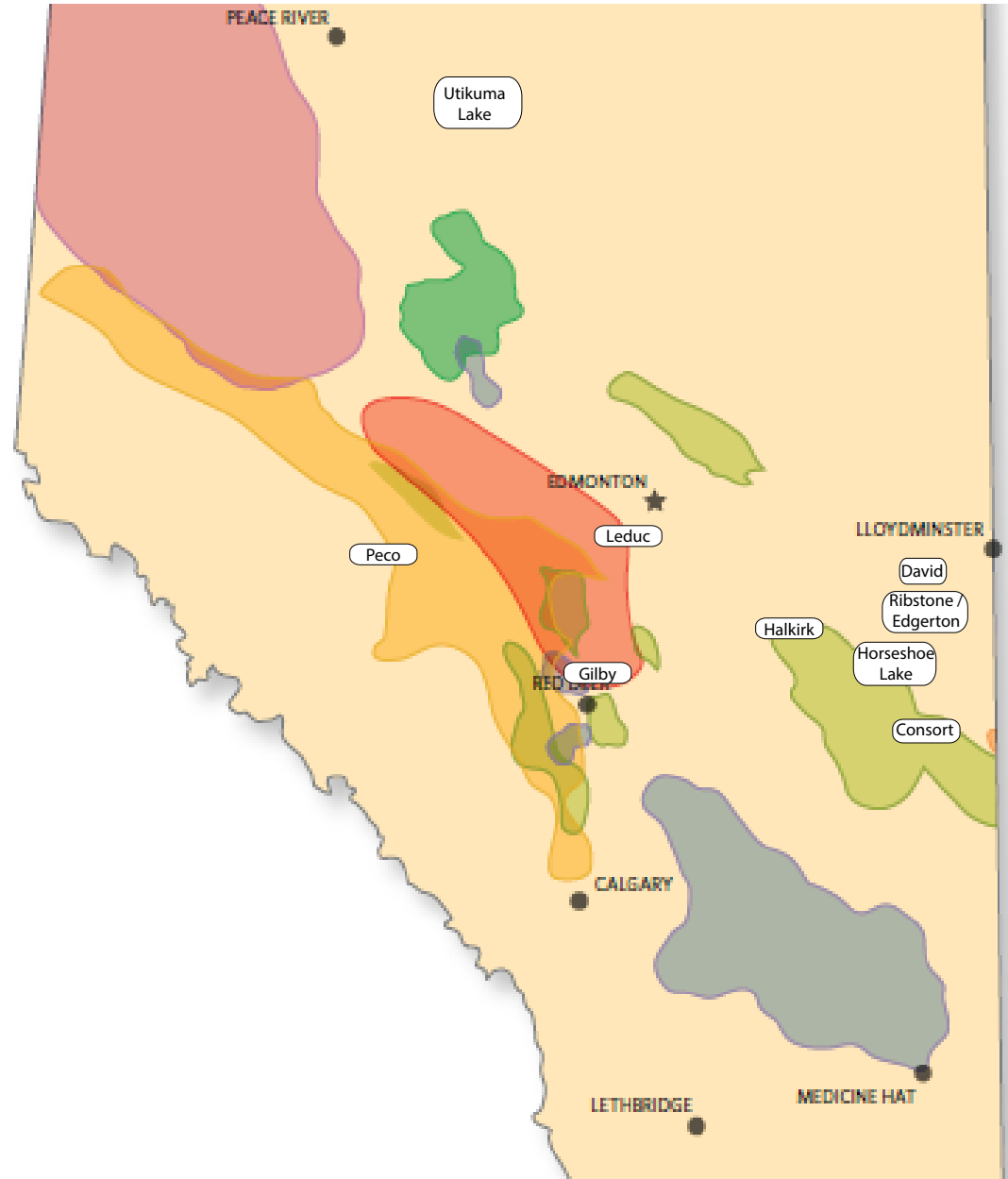
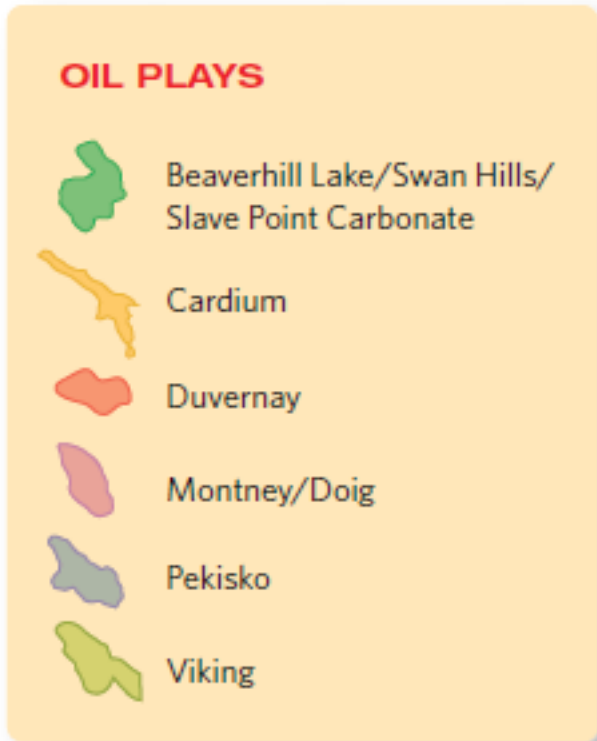
Leduc: Twp 49 Rge 26W4M

Recently, several Nisku horizontal wells have been licensed in close proximity to Ignite's land in this legacy area, and early results look encouraging. In addition, we see uphole potential in the Wabamun, Ellerslie and Viking on Ignite's lands.

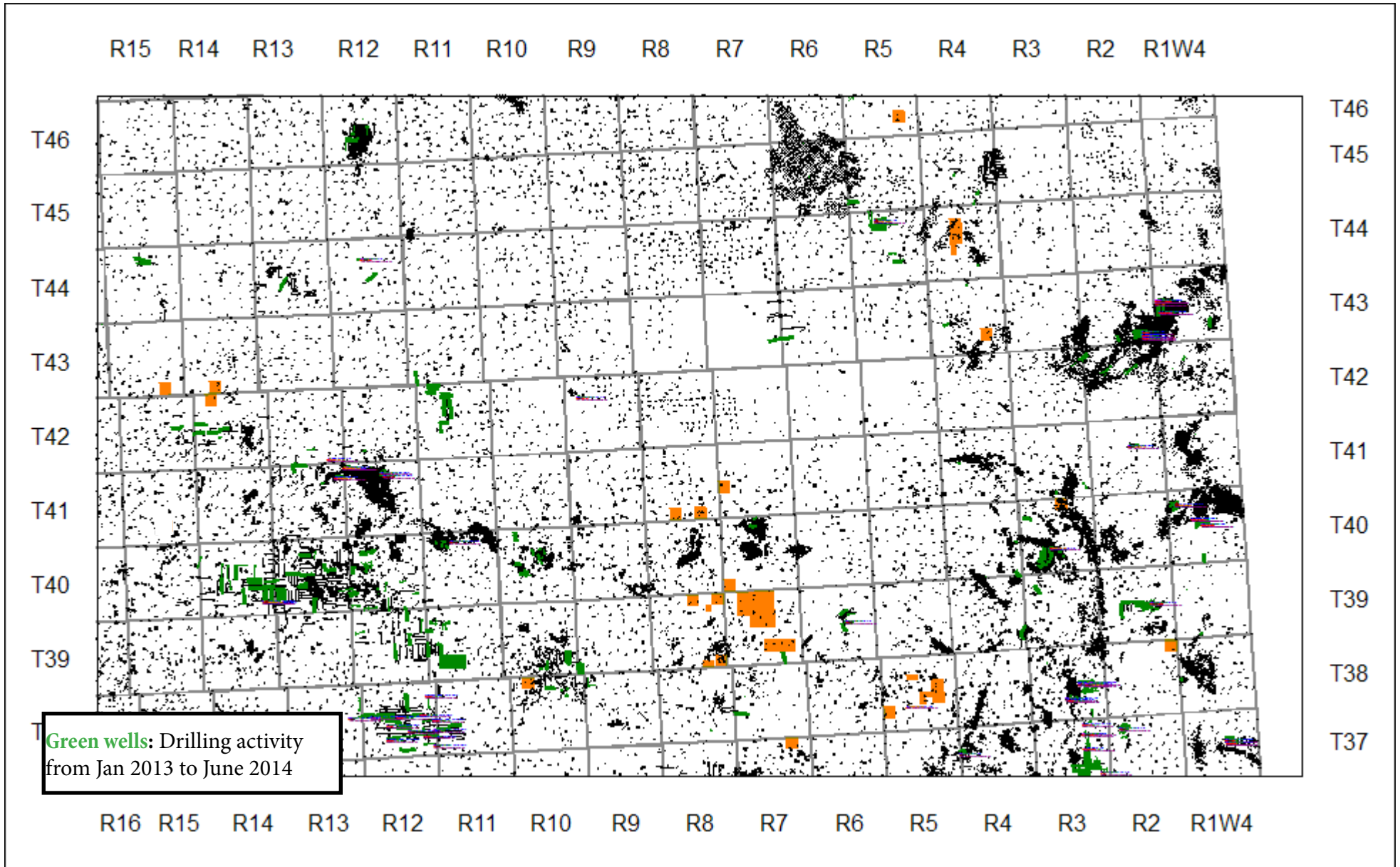
Gilby Region:

Gilby: Twp 39 Rge 28W4M

Ignite has 1393 acres following the Viking trend with recent Hz drilling activity to the northwest.

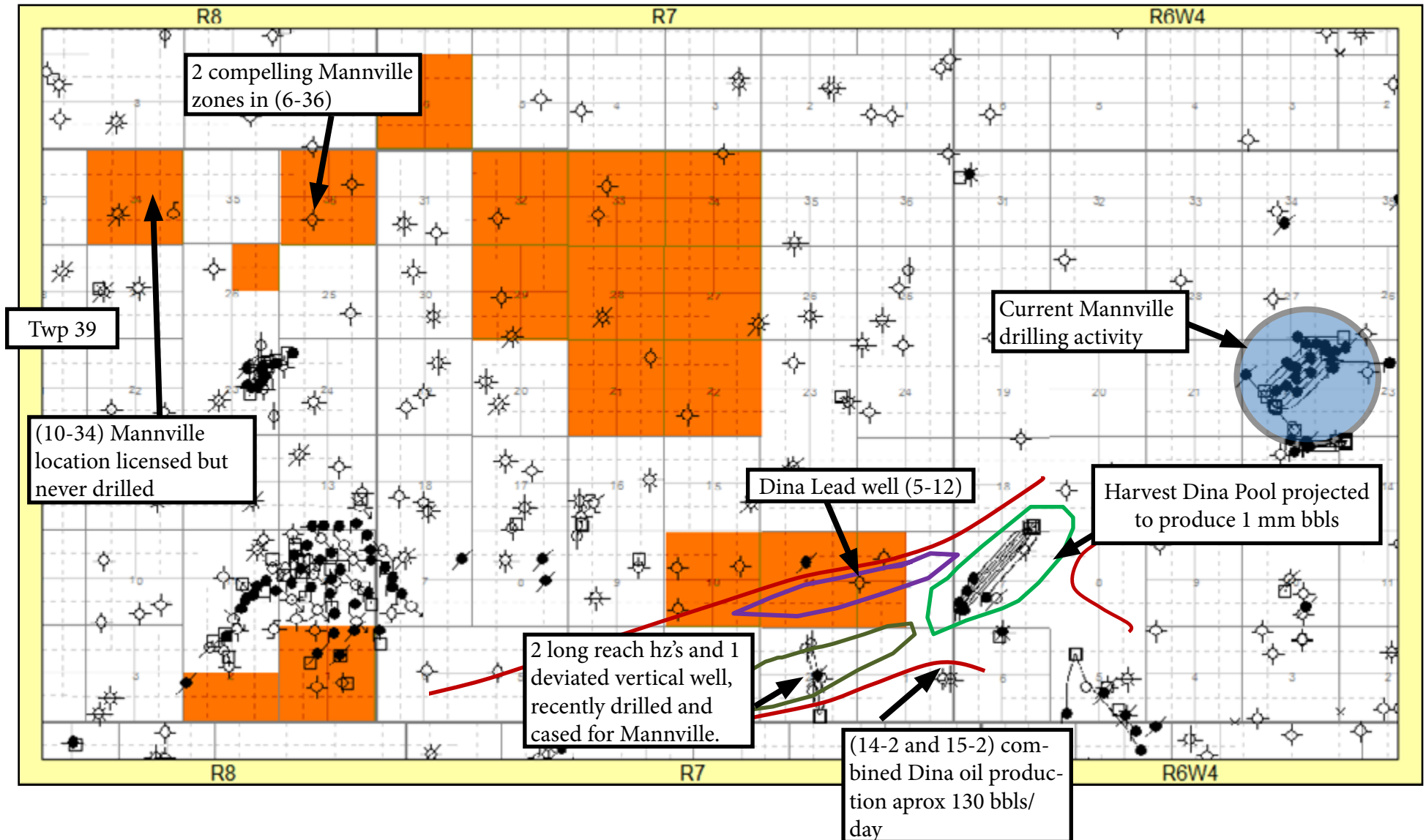


*Taken From the Alberta Oil And Gas Industry Quarterly Update from Winter 2013

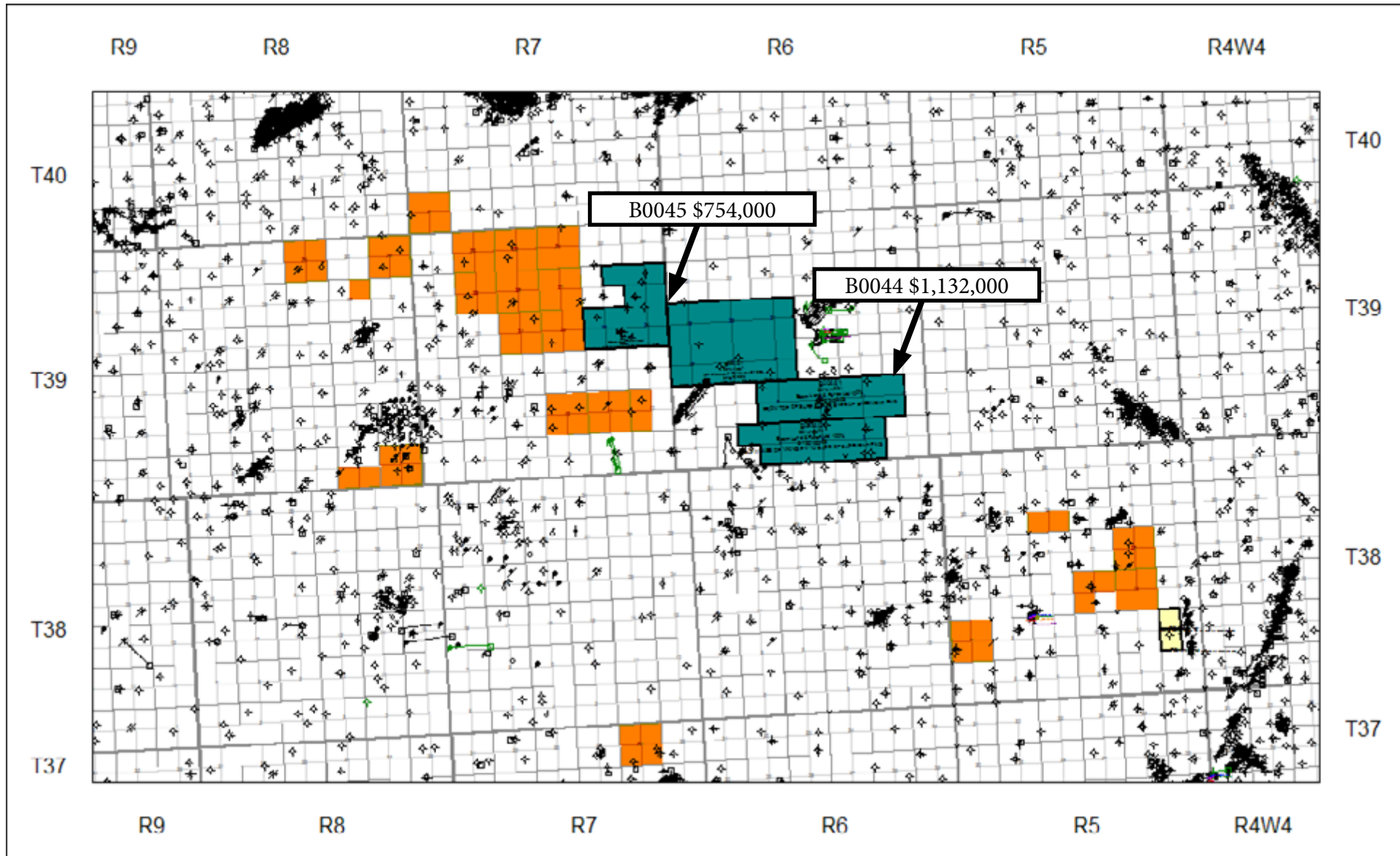


Provost: Horseshoe Lake: Mannville

- Recent horizontal Dina development on offset land.
- Large block of underdeveloped Mannville and Viking rights.

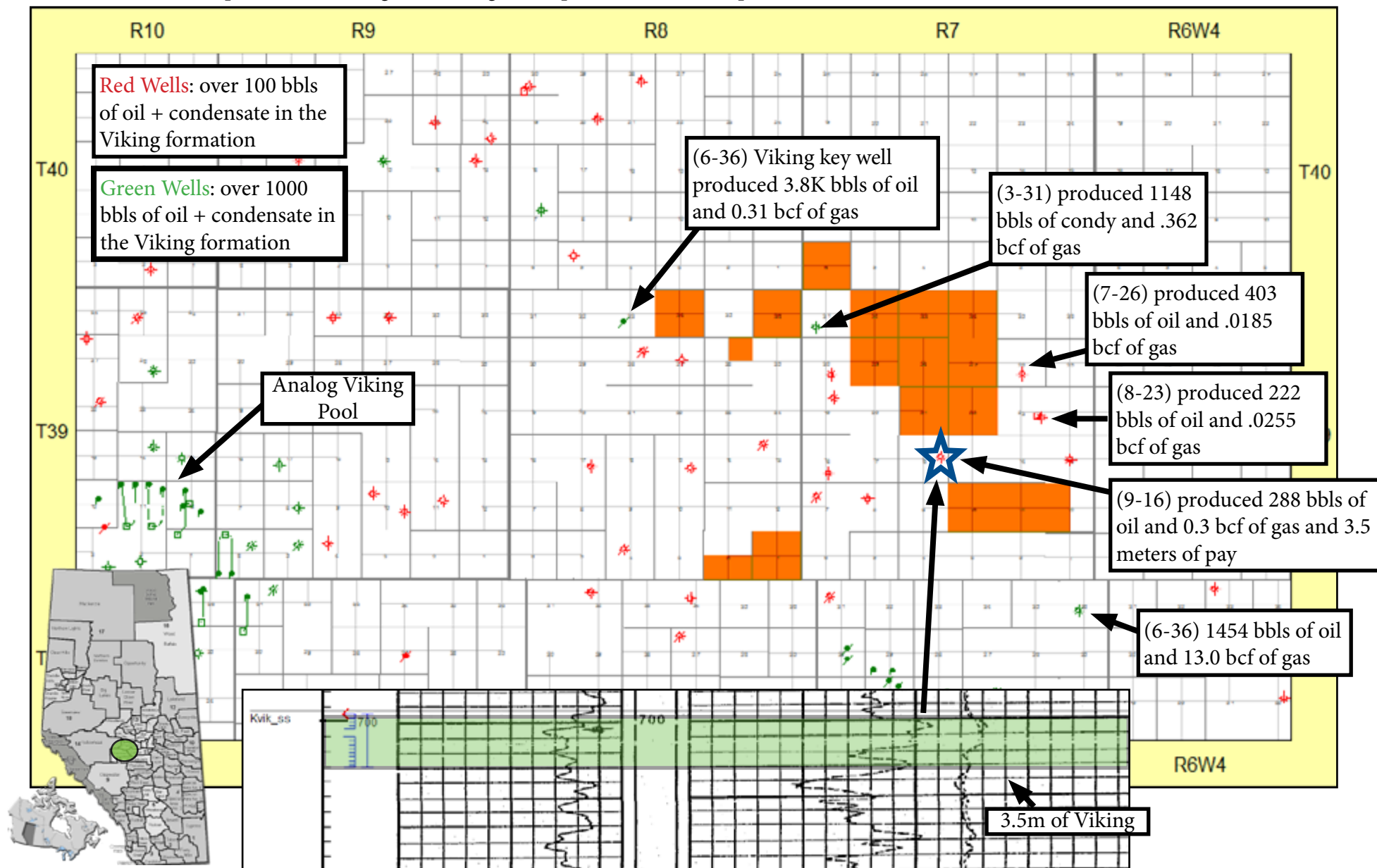


October 1st 2014 Landsale



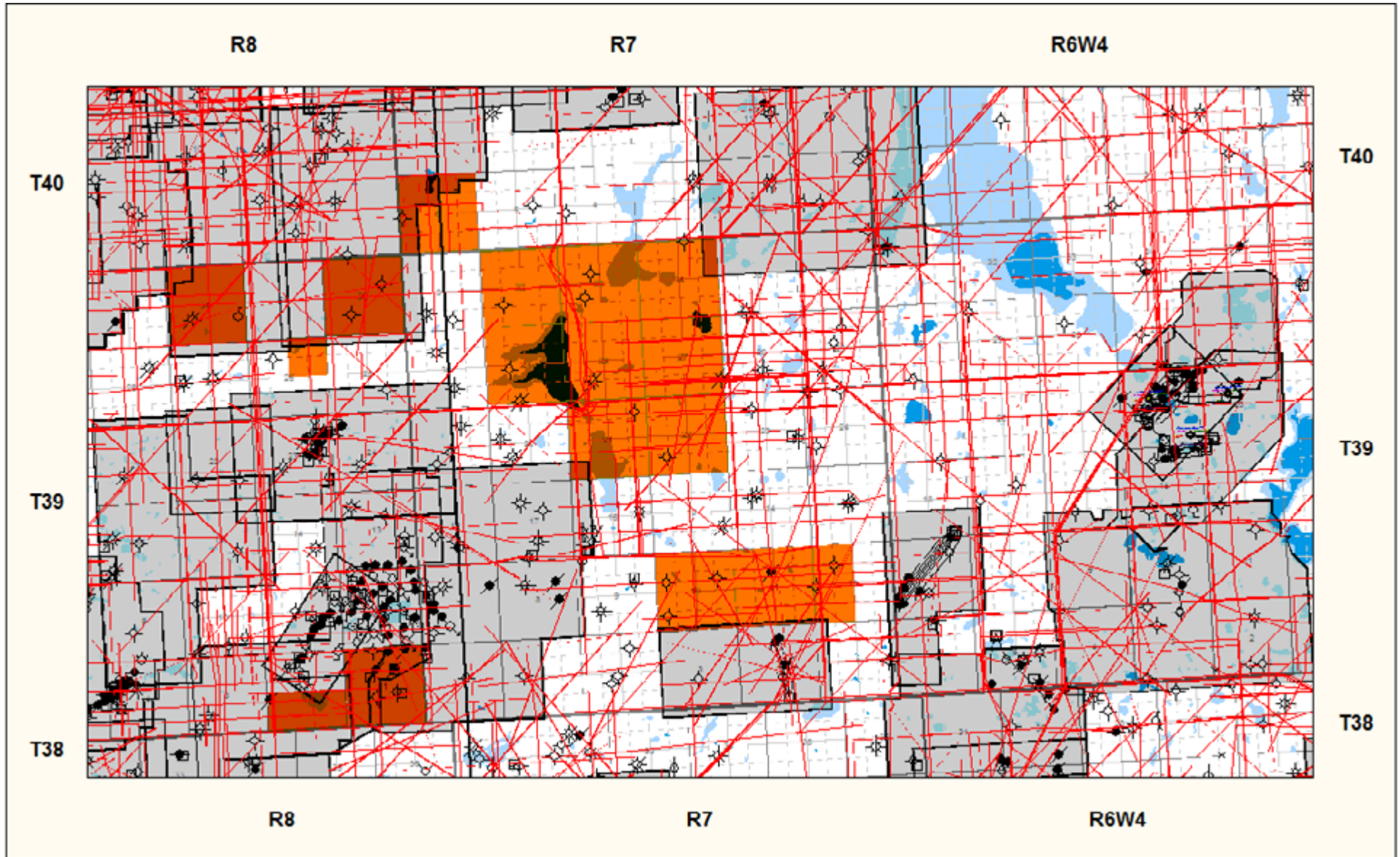
Provost: Horseshoe Lake: Viking

Horseshoe Lake has the potential for a large Hz Viking development based on oil production and DSTs.



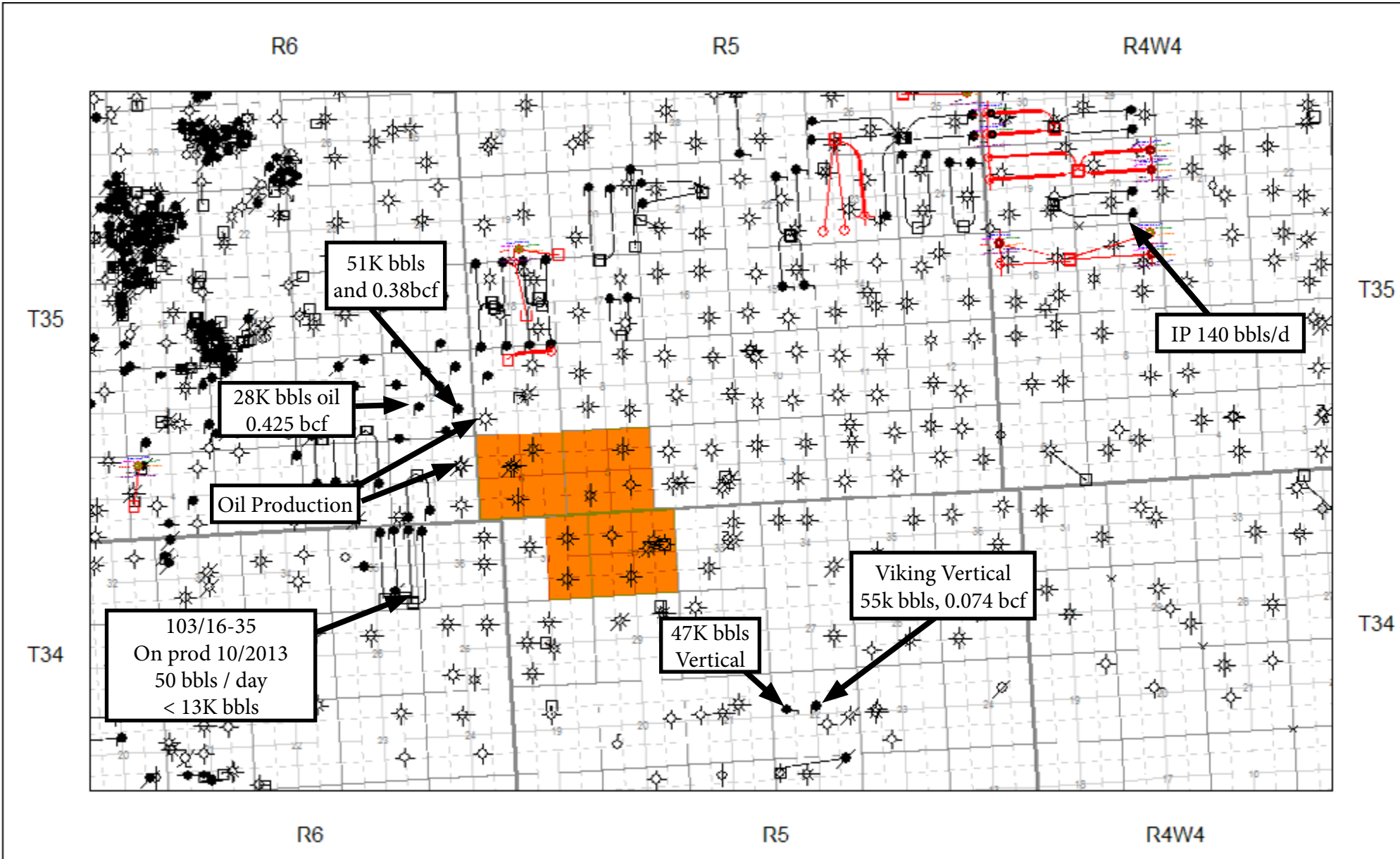
Provost: Horseshoe Lake 2D and 3D Coverage

- Older 2D and 3D data available



Provost: Consort

- 3.5 contiguous sections, offsetting active Viking Hz drilling program



Provost: Gooseberry Prospect

An overlooked section in a region of million barrel fields.

> 1 million bbls recoverable upside in combined Dina / Rex zones.

Aprox. D+A cost estimate is 300K.

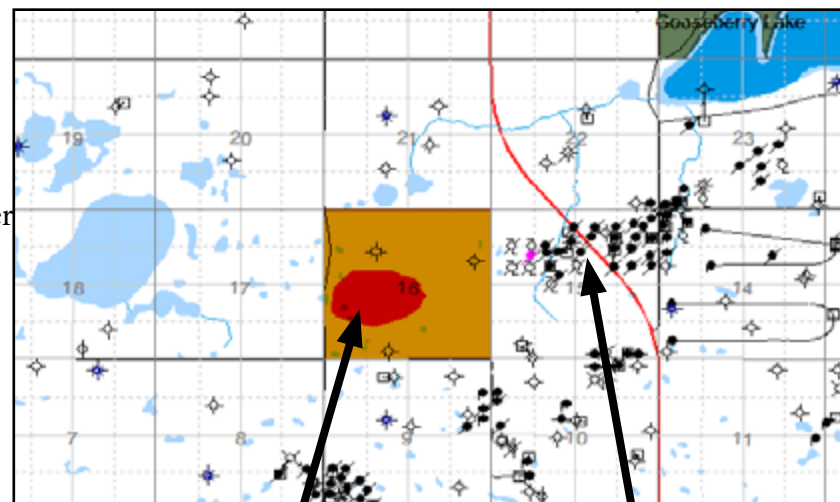
Section 16 is the only section not to be 3D'd, and the 2D was just made available after 26 years. Lands are continued under Section 17 to base of Mannville until Oct 01, 2015.

Resource upside:

- 650K bbls recoverable upside in the Dina.
- 470K bbls recoverable upside in the Rex.

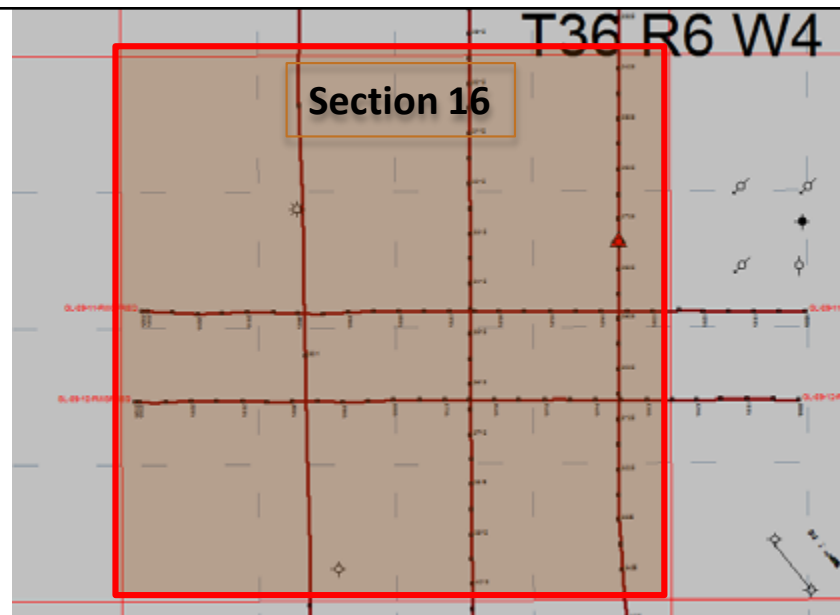
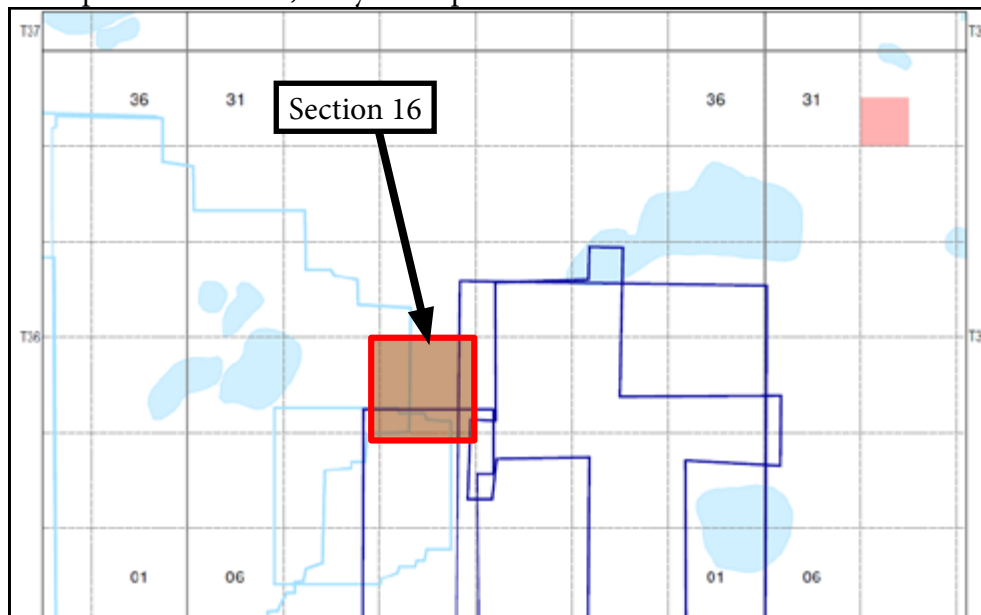
Additional potential:

- Viking Hz play active 3 miles south.
- Sparky Hz play active 1 miles east.
- Uphole Mannville, Belly River potential.

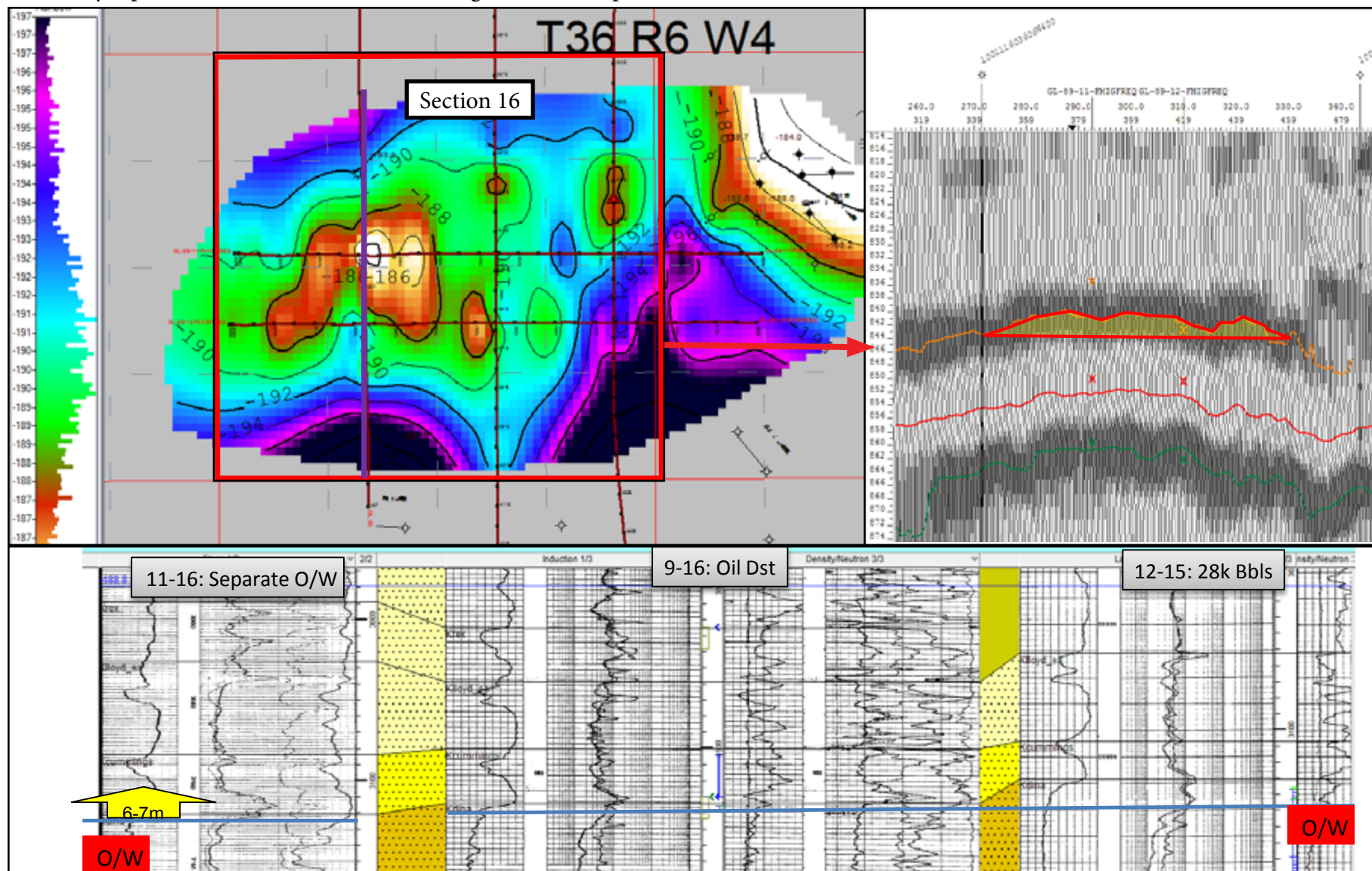


Gooseberry Lake
Dina Prospect

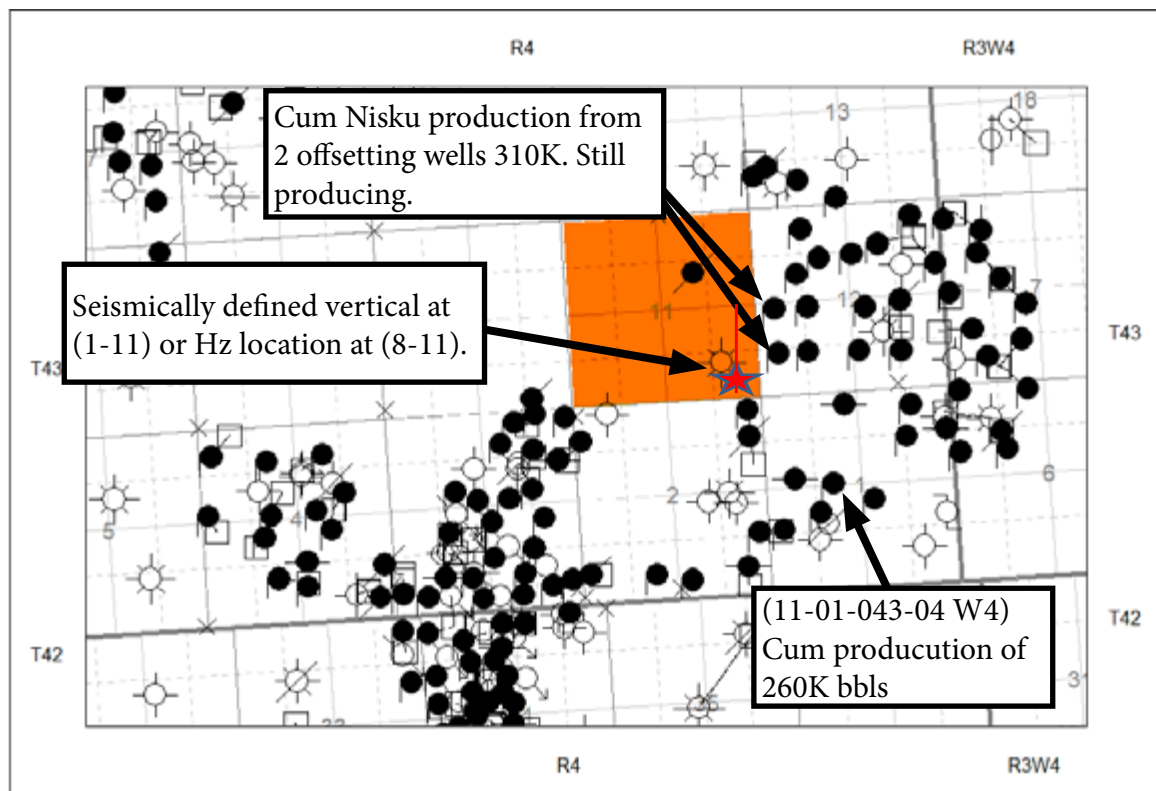
Dina SS Pool 3.5
million to date



The newly reprocessed 2D seismic revealed a large undrilled separate Dina structure.

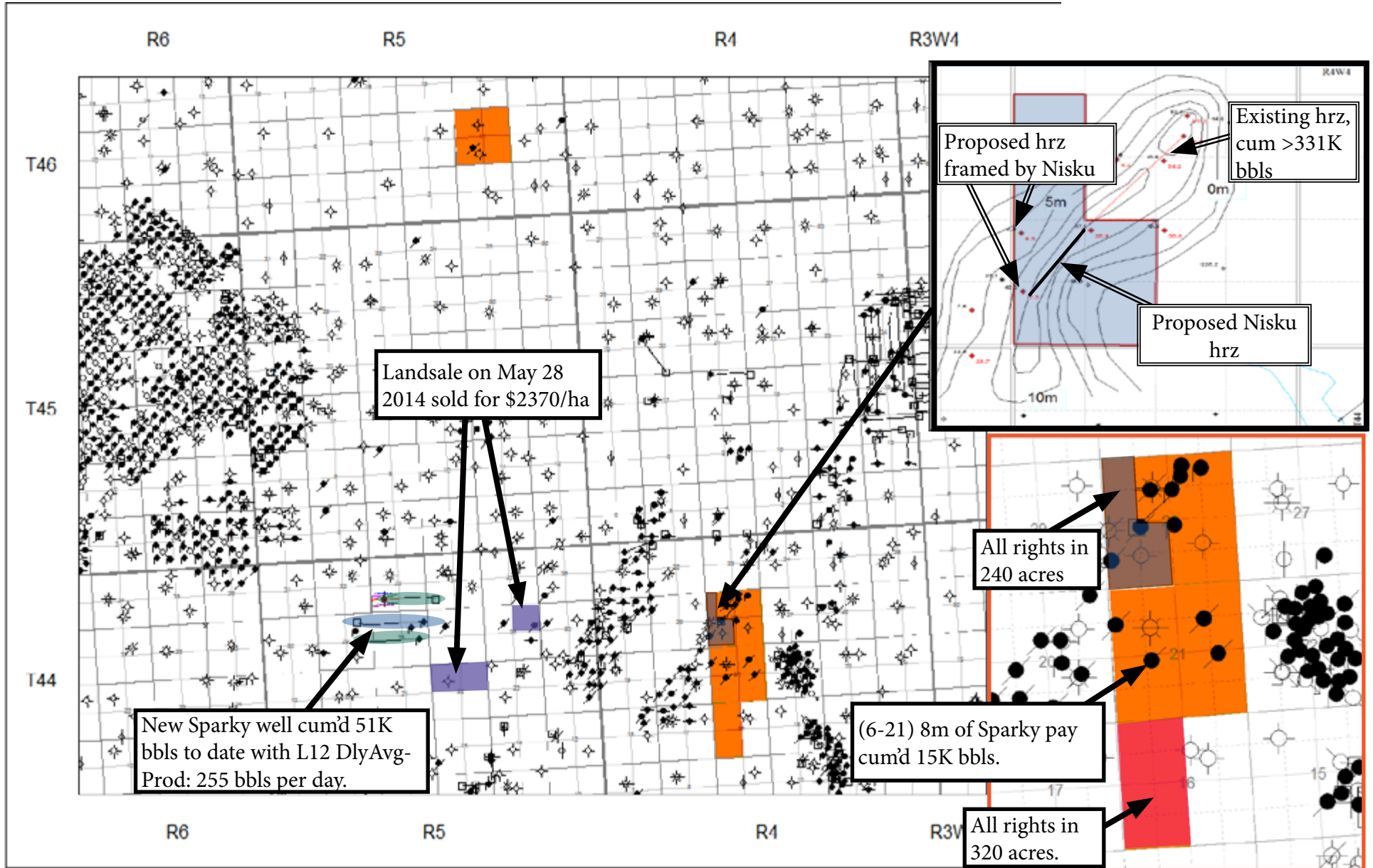


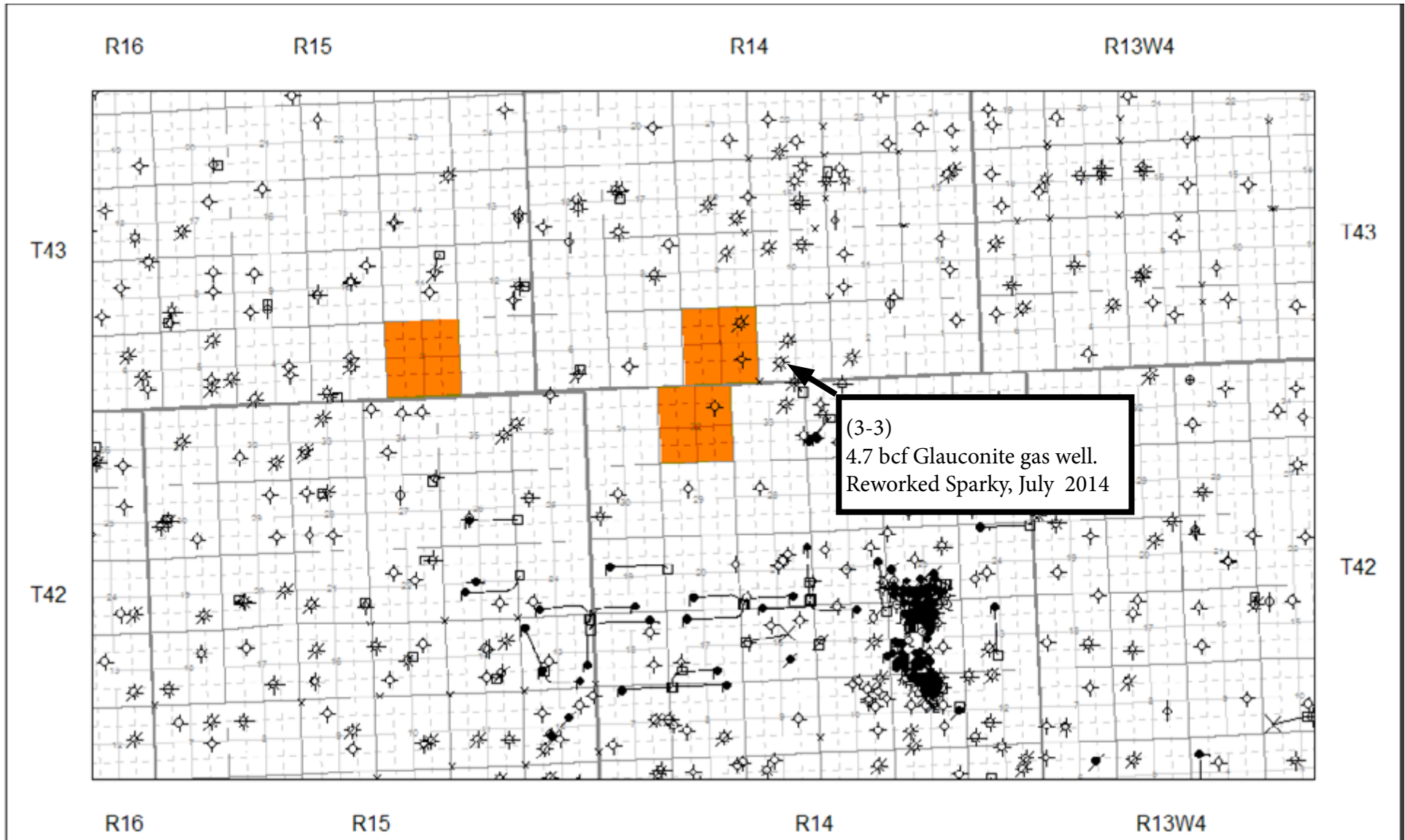
The original operators stopped when they encountered thin oil over water in 9-16, not recognizing the separate feature to the west. 11-16 has a separate O/W contact, implying the Prospect is separate from the up-dip pool. Rex sands are also present and may be trapped over high.



- Ignite owns 100% interest in the Nisku rights in section 11-43-4-W4. Section 11 is offset by several vertical Nisku wells, of note are, 4-12 and 5-12, which combined have produced over 310K bbls and continue to produce to date.
- The SE of 11 was previously downspaced by the previous operator and a Nisku Hz well was licensed in 2006. It appears for technical reasons the hz attempt was not successful and the concept remains untested.
- A 3D seismic program exists over section 11 but has not been made available for Ignite to purchase.
- Ignite has acquired available 2D data over the SE of section 11 where we believe excellent potential for drilling a Hrz well exists. To the north at Edgerton Ignite owns additional Nisku rights, the concept horizontal well drilled in 102/15-28-44-4-W4 into the Nisku has produced 345K bbls and is still on production.

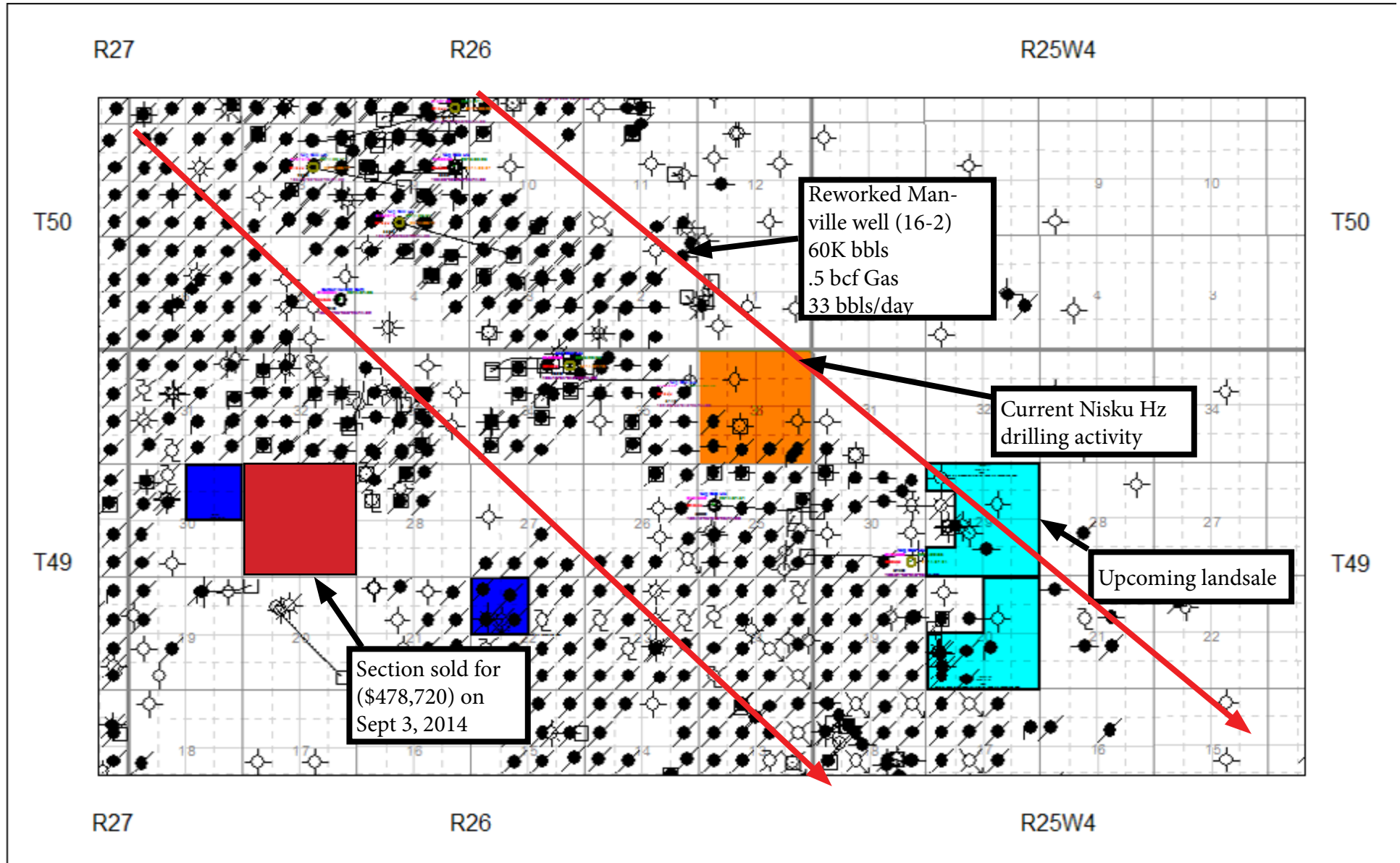
Chauvin: Edgerton and Wainwright





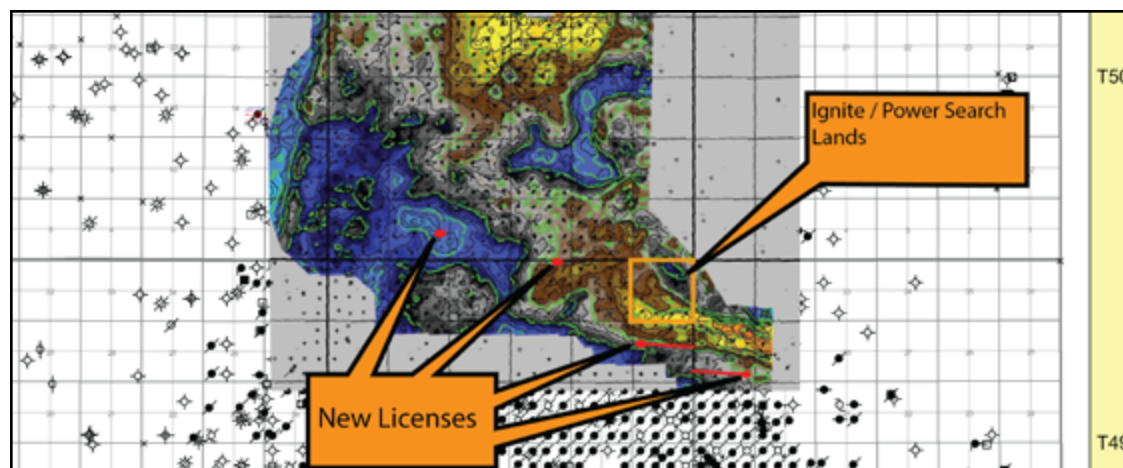
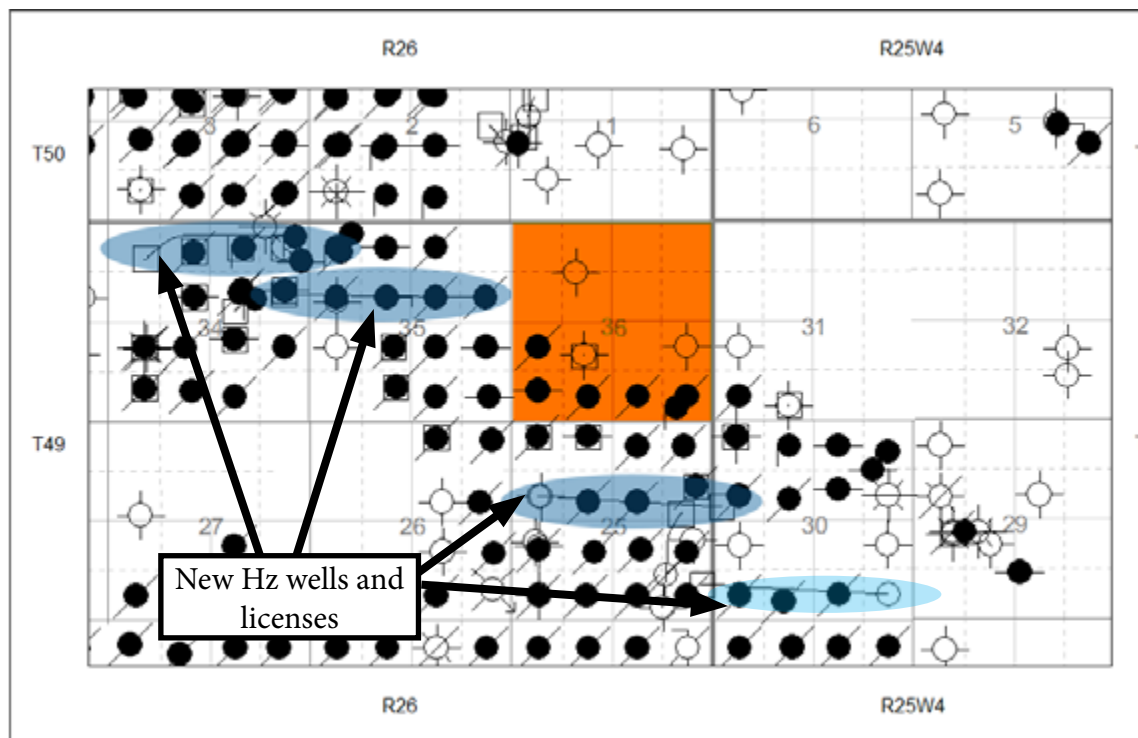
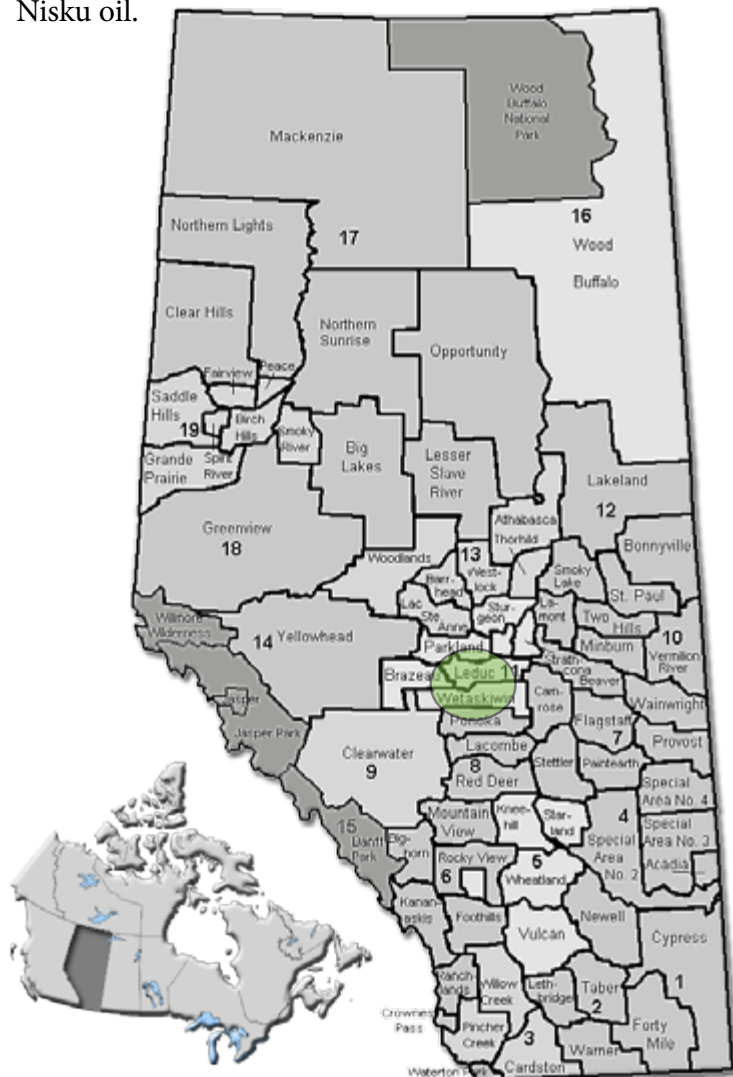
Leduc Region

- Ignite has acquired lands adjacent to the historic Leduc field where conventional and horizontal drilling for the Nisku is underway.



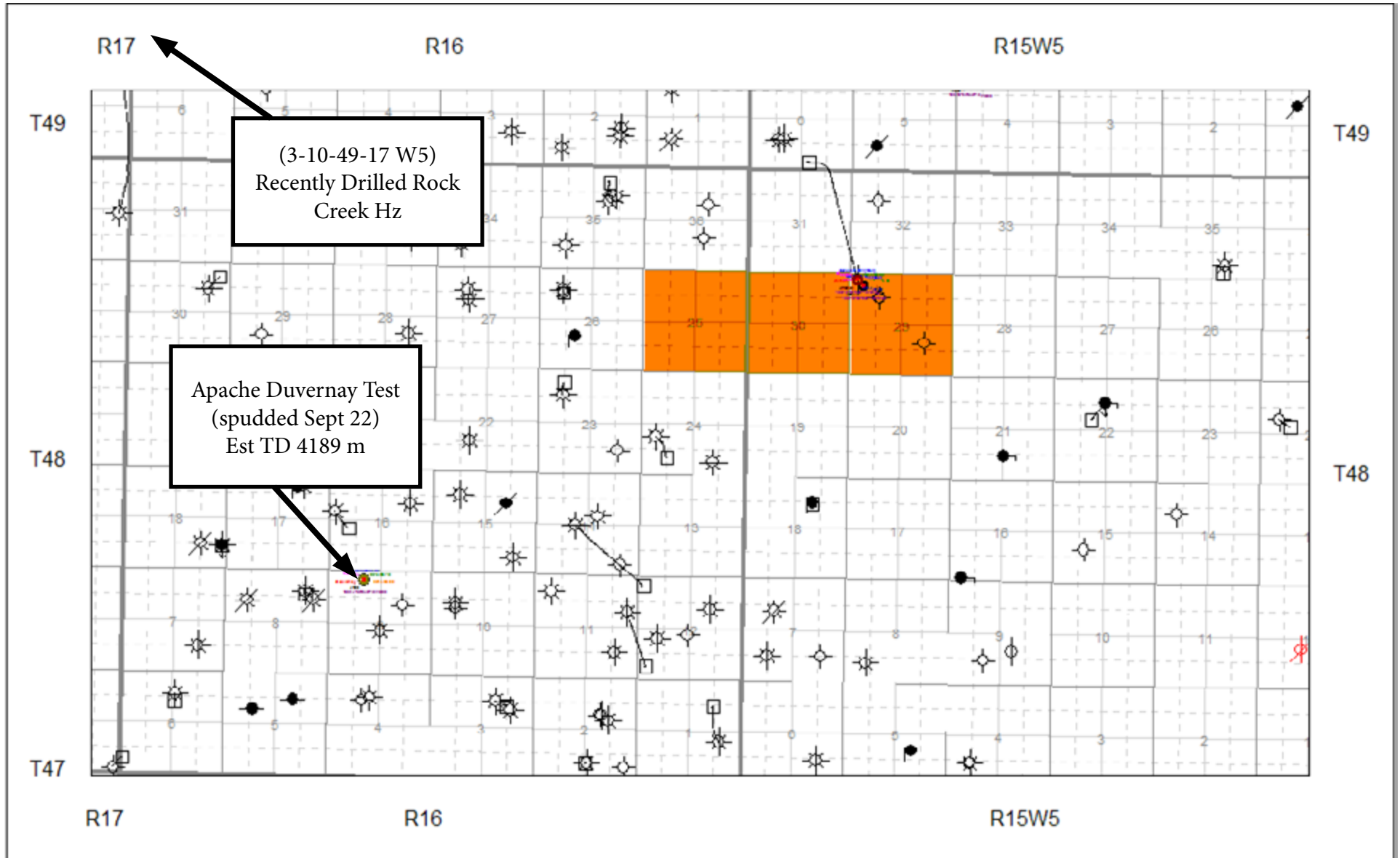
Leduc Region

- Ignite has acquired lands adjacent to the historic Leduc field where conventional and horizontal drilling for the Nisku is underway.
- 3 new long reach Hz wells have recent been licensed for Nisku oil.



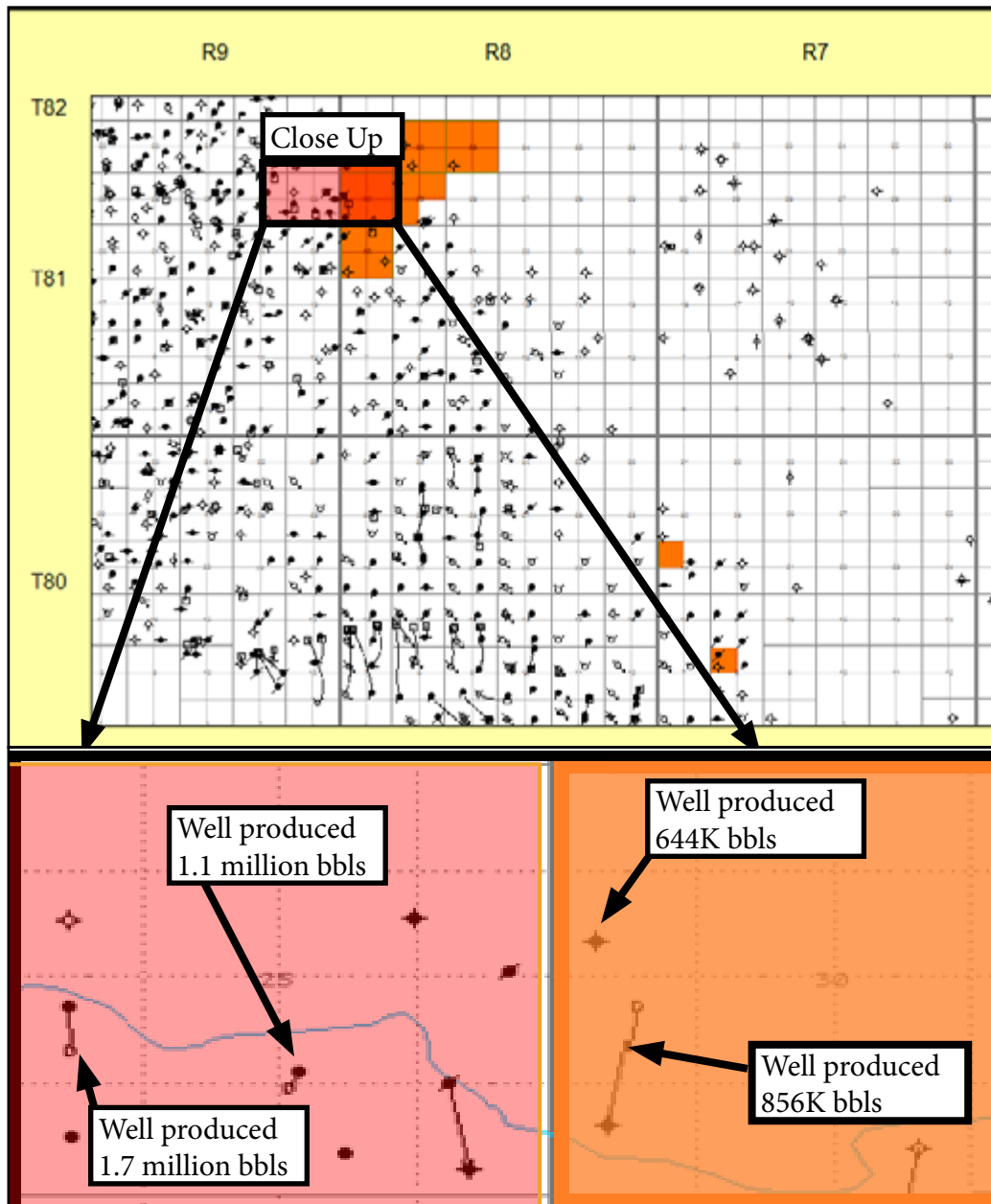
*Seismic Background from Merrit Energy Company / RBC Rundle 2011 Oil and gas Properties Offering

- Ignite holds 1920 contiguous acres in the West Pembina Area with multi-zone potential in Rock Creek, Shunda, Nisku and Duvernay formations.



Nipisi Region: Utikuma Lake

- Offsets 2 wells that produced over a million bbls each in the Keg River.
- Multiple zones including the Keg River and Gilwood.
- Seismic available.



- 1393 acres following the Viking trend with recent Hz drilling activity to the northwest.
- 2 new Viking Hz wells recently drilled

